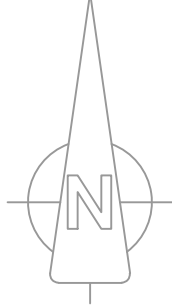
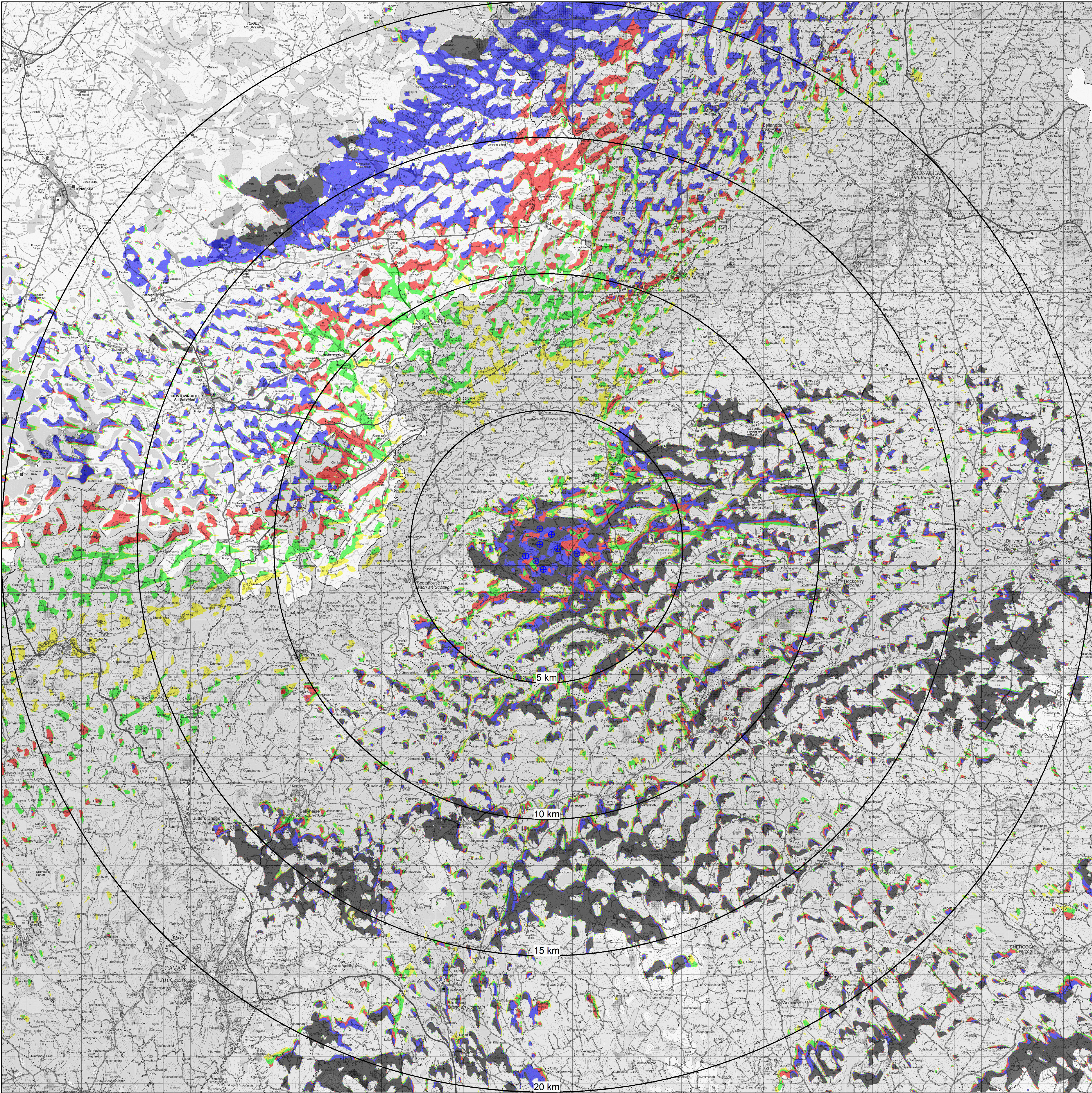
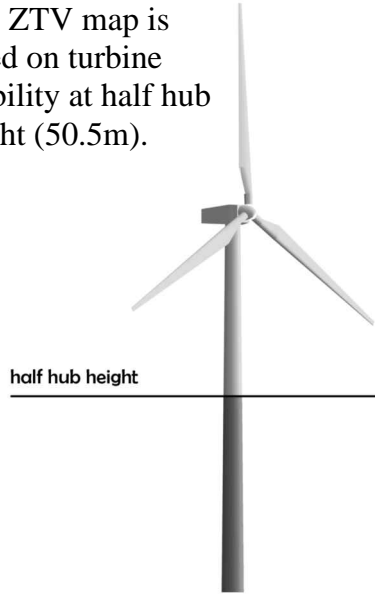


ZTV Base:
This ZTV map is based on turbine visibility at half hub height (50.5m).



Legend:

Location of proposed turbines



Number of turbines theoretically visible

- 1
- 2 to 3
- 4 to 5
- 6 to 7
- 8



Date:	Rev:	Description:	Drawn By:
-------	------	--------------	-----------

Prepared by:



Client:

Drumlins Park Ltd

Job Title:

Drumlins Park Ltd

Drawing Title:

Figure 62 : ZTV map at half hub height

Drawing No.:	DRM_PAS_PHO_02	Revision No.:	0
Scale:	(A1) 1:75,000	Date:	04/10/2019
Drawn By:	C.M.P	Checked By:	J.B
		Confirmed By:	S.C

Description:
A 20km Radius Zone of Theoretical Visibility map for the proposed wind farm at half hub height.

The ZTV represents a 'worst case scenario' as it does not take into account the potential screening of views by buildings or vegetation

OSI © License: EN 0063319